



Mulifunction Turn Signals for Yamaha T700

Disclaimer: We assume you possess the expertise and relevant tools to work on your machine. We also assume you have the OEM/Stock owner's manual or technical service manual for your machine. If you do not possess the skills, knowledge, or tools necessary to perform the installation of electrical and/or aftermarket parts, please see a qualified service provider.

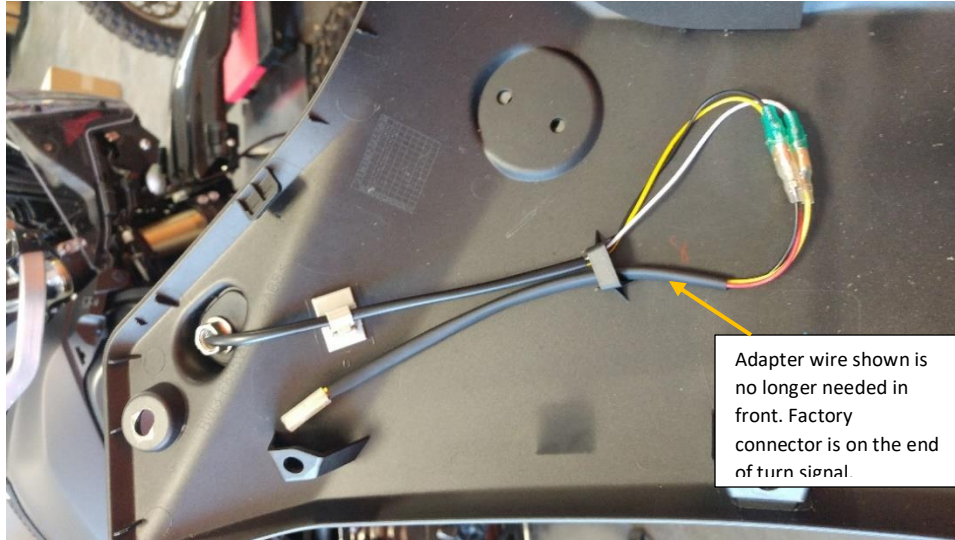


Thank you for purchasing the Cyclops Adventure Sports Multi-function turn signals for the Yamaha T700.

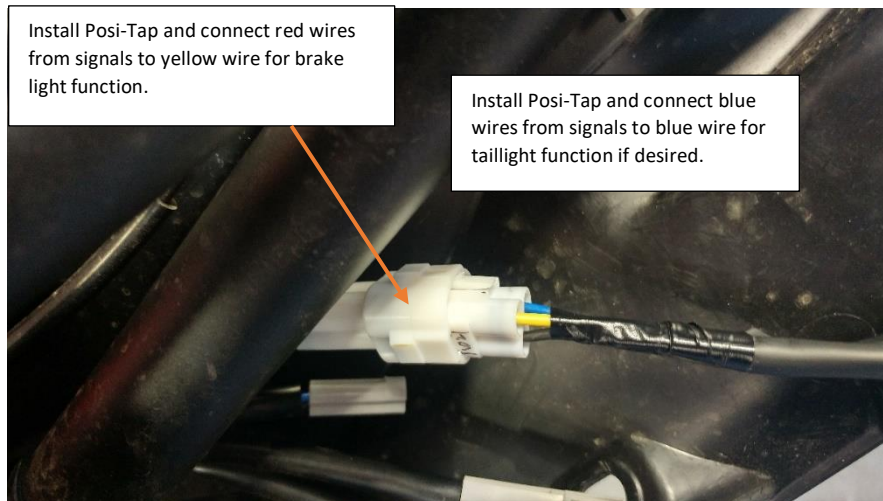
- Start by removing the front side panels and remove the factory turn signals.
- Place the turn signal adapter plates(a) into the factory holes. 2 plates per turn signal. The little tabs on the inside of the side panels will need to be trimmed with a razor knife for the inner plate to fit. Be sure to trim flush.



- Run wires for front turn signals(d) through hole and install and tighten silver lock nut **DO NOT twist turn signal to tighten. Only turn the silver lock nut!!** onto the turn signal stem sandwiching the 2 adapter plates(a) and side panel. Orientate properly. Do not over tighten.
- The front turn signals are ready to be plugged in and the side panels replaced.

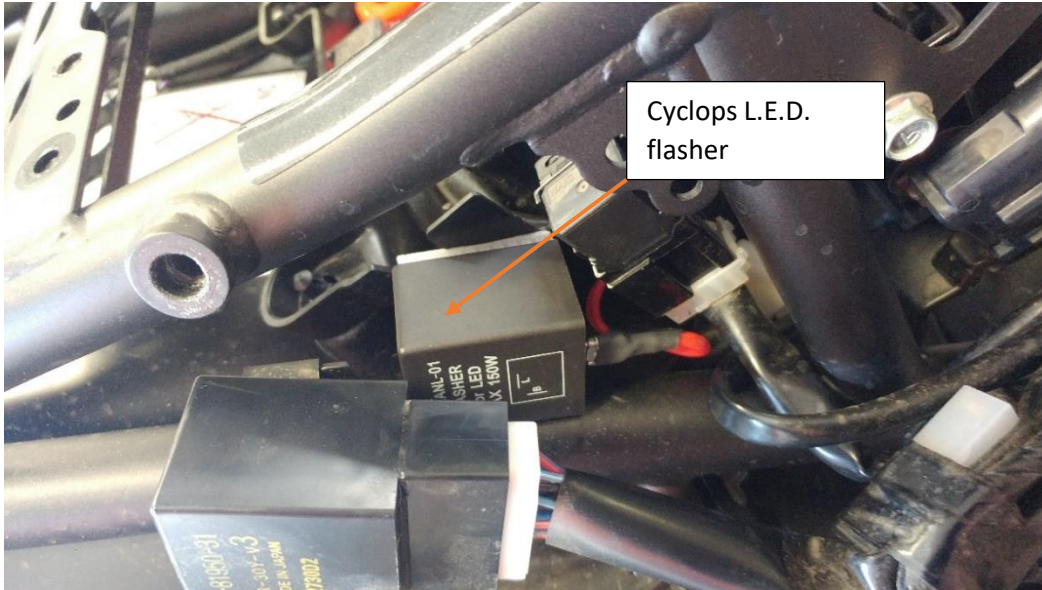


- Remove plastics covering the rear section of the bike and rear fender/turn signal mount. Use factory manual or online videos for this procedure.
- Remove factory turn signals. Note wire routing.
- Install turn signal adapter plates(a). 2 per turn signal.
- Run wires for rear turn signals through hole and install and tighten silver lock nut **DO NOT twist turn signal to tighten. Only turn the silver lock nut!!** onto the turn signal stem sandwiching the 2 adapter plates and side panel. Orientate properly. Do not over tighten.



- Reassemble rear fender/turn signal mount and route wires as per factory wire route.

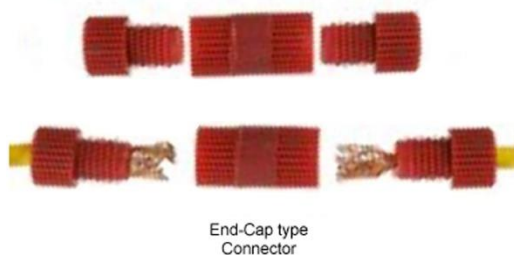
- Connect the left signal to the grey factory plug and the right turn signal to the black factory plug
- Using Posi-Tap. Connect the red wire from turn signals to the yellow wire on the bike taillight harness for brake light function.
- Using Posi-Tap. Connect the blue wire from turn signals to the blue wire on the bike taillight harness for taillight function if desired.
- Locate factory turn signal flasher relay on right hand side of bike about where front and rear seat meet.
- Remove factory flasher and replace with Cyclops L.E.D. flasher(b).
- Plug in front turn signals and test the system to ensure proper functionality. White running light



in front when key is turned on. Taillight/running light(dim red) on rears when key is turned on(if desired) Red brake lights(bright red) in back when brake is applied. Amber turn signals when left/right switch is applied.

- Once proper function is achieved secure all wires. Replace all panels.

Posi-Tap & Posi-Lock Connector Instructions: Remove the end cap and place over wire you wish to tap. With wire threaded into cap, tighten cap into the Posi-Tap body.

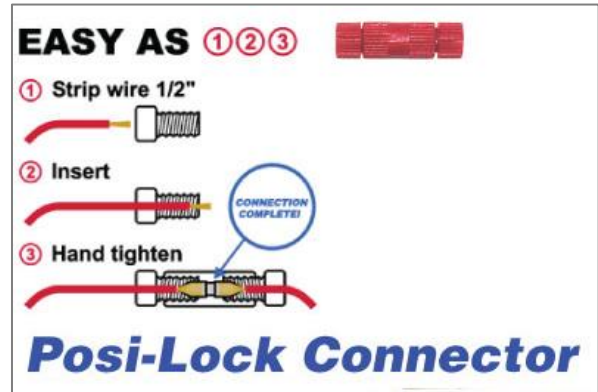
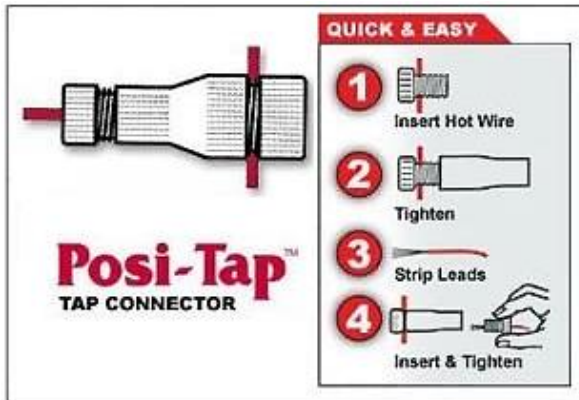


End-Cap type Connector

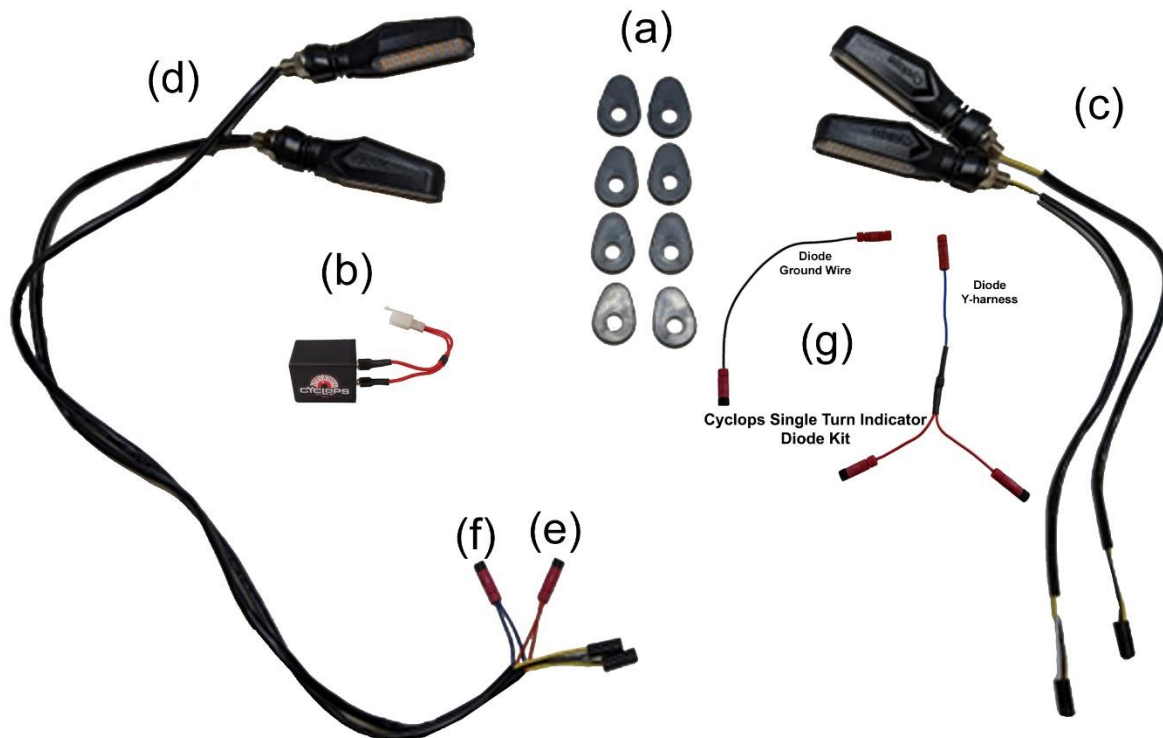


Wire-Splice type Connector

Posi-Tap & Posi-Lock Connectors Continued



Kit contents



a	Turn Signal Adapter Plates	Qty 8	e	Posi-Tap for Brake Light (red wires)	Qty 1
b	Cyclops LED Flasher	Qty 1	f	Posi-Tap for Taillight (blue wires)	Qty 1
c	Front multifunction Turn Signals	Qty 2	g	Single Turn Indicator diode kit	Optional
d	Rear multifunction Turn Signals	Qty 2			