

Multifunction Turn Signals for Yamaha T700

Disclaimer: We assume you possess the expertise and relevant tools to work on your machine. We also assume you have the OEM/Stock owner's manual or technical service manual for your machine. If you do not possess the skills, knowledge, or tools necessary to perform the installation of electrical and/or aftermarket parts, please see a qualified service provider.

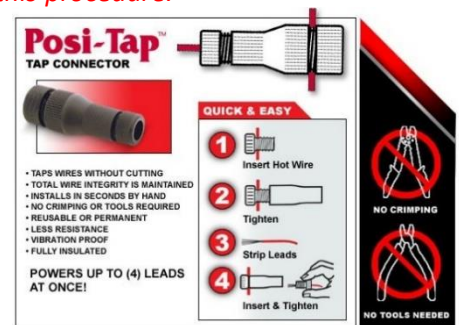
Install Front Lights

1. Remove the factory turn signals and front side panels.
2. Place 2 turn signal adapter plates into each factory hole.
3. The little tabs on the side of the side panels need to be trimmed with a razor knife for the inner plates to fit. **Be sure to trim flush.**
4. Run wires for turn signals through the hole and install sandwiching the two adapter plates on each side of the panel.
5. Use a 14mm wrench on the silver nut to tighten.
Tighten only the 14mm lock nut. Do not twist the turn signal!
 - We recommend using Blue Threadlocker on the threads.
6. Plug in the turn signals and replace your side panels.



Install Rear Lights

1. Remove plastics covering the rear of the bike. Same with the rear fender/turn signal mount. **Use the factory manual or online videos for this procedure.**
2. Remove the factory turn signals and note wire routing.
3. Place 2 turn signal adapter plates into each factory hole.
4. Run wires for turn signals through the hole and install sandwiching the two adapter plates on each side of the panel.
5. Use a 14mm wrench on the silver nut to tighten.
Tighten only the 14mm lock nut. Do not twist the turn signal!
 - We recommend using Blue Threadlocker on the threads.
6. Route the wires the same as the factory and then reassemble the rear fender/turn signal mount.
7. Connect the left turn signal to the gray factory plug and the right to the black factory plug.
8. Connect the red wires to the yellow taillight wire using the Posi-Tap.
9. Connect the blue wires to the blue taillight wire using the Posi-Tap.
If you do not want running lights, do not connect the blue wire.



Install LED Flasher

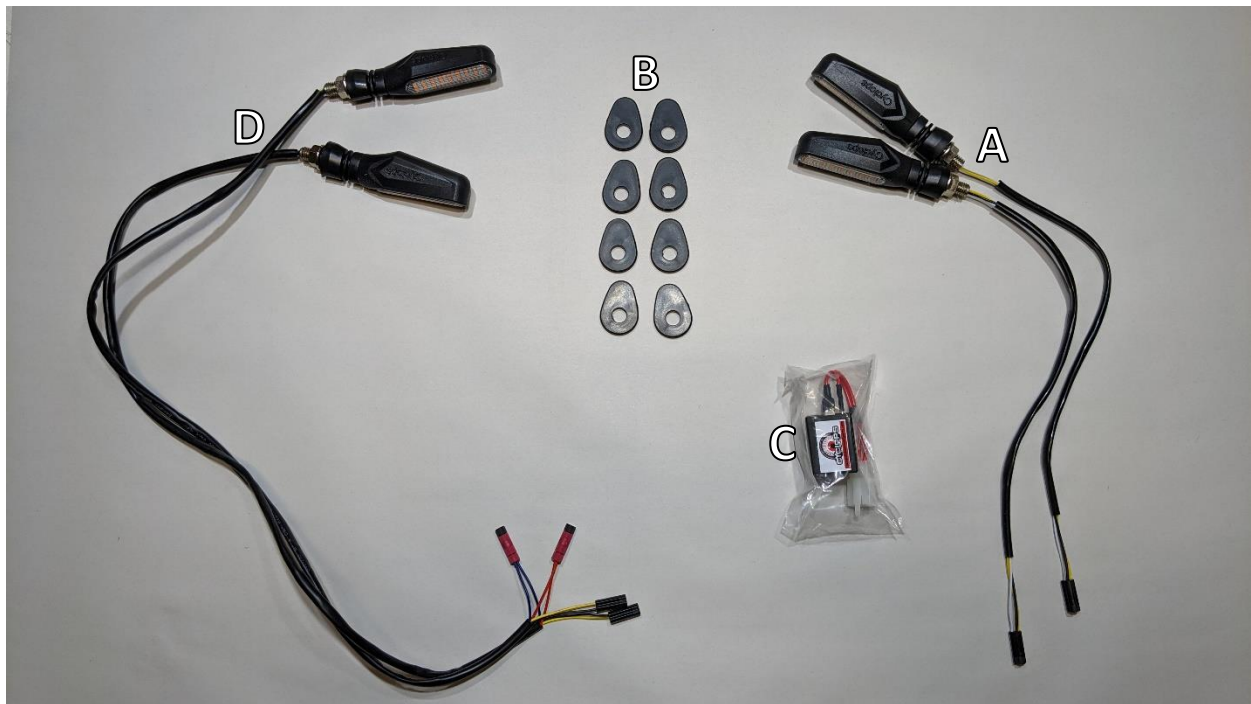
1. Locate the factory turn signal on the right-hand side of bike about where front and rear seat meet.
2. Remove and replace with the Cyclops LED flasher to prevent hyper-flash.

Cyclops L.E.D. Flasher

Test Lights

1. The front should have a white running light if the bike is running.
2. The rear should light up solid red. **(Only if you connected the blue wire)**
3. When the brakes are applied, the taillights will become brighter.
4. The turn signals should work the same as the factory.
5. Zip-tie any loose wires and then reassemble the bike.





A	Front Turn Signal	Qty 2	C	LED Flasher Relay	Qty 1
B	Adapter Plates	Qty 8	D	Rear Turn Signal	Qty 2

