

Multifunction Turn Signals for KTM/Husky

Disclaimer: We assume you possess the expertise and relevant tools to work on your machine. We also assume you have the OEM/Stock owner's manual or technical service manual for your machine. If you do not possess the skills, knowledge, or tools necessary to perform the installation of electrical and/or aftermarket parts, please see a qualified service provider.

Install LED Flasher

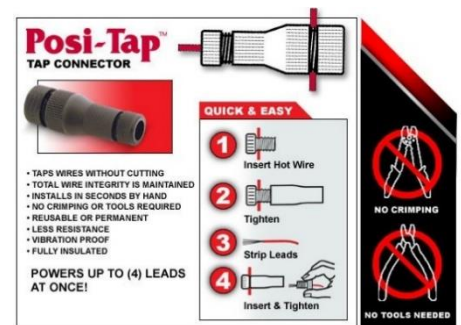
1. Locate the factory turn signal flasher behind the instrument panel.
2. Remove and replace with the Cyclops LED flasher to prevent hyper-flash.

Install Front Lights

1. Replace factory turn signals with MF turn signals.
2. Use a 14mm wrench on the silver nut to tighten.
Tighten only the 14mm lock nut. Do not twist the turn signal!
 - We recommend using Blue Threadlocker on the threads.
3. Locate ACC2 (**Switched Power Source or use parking bulb hot wire**)
4. Use the supplied Posi-Tap and connect the white wire to the ACC2 black with red stripe wire.
5. Insert bullet connectors from the white jumper wire to the bullet connectors on MFs. (White)
6. Connect the white connector to the factory turn signal connector.

Install Rear Lights

1. Replace factory turn signals with MF turn signals.
2. Use a 14mm wrench on the silver nut to tighten.
Tighten only the 14mm lock nut. Do not twist the turn signal!
 - We recommend using Blue Threadlocker on the threads.
3. Locate the wiring harness that illuminates the brake/taillights.
4. Connect the red wires to the white/green wire using the Posi-Tap.
5. Connect the blue wires to the yellow taillight wire using the Posi-Tap.
If you do not want running lights, do not connect the blue wire.
6. Connect the white plug to the factory turn signal plug.



Test Lights

1. The front should have a white running light if the bike key is on.
2. The rear should light up solid red. (**Only if you connected the blue wire**)
3. When the brakes are applied, the taillights will become brighter.
4. The turn signals should work the same as the factory.

If you experience all the signals flashing at once, install the Single Turn Indicator Isolator.

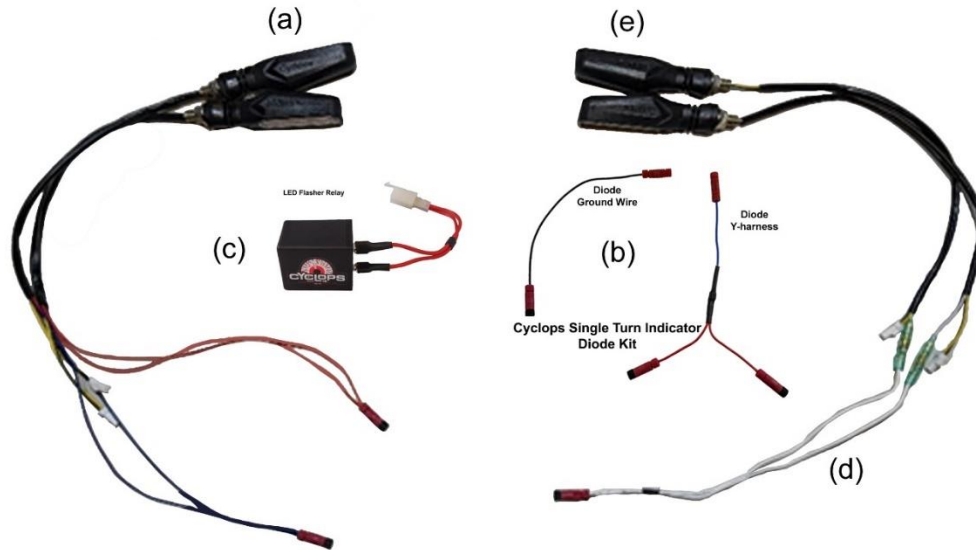
We typically see this on bikes with an incandescent bulb separate from the instrument cluster.

5. Zip-tie any loose wires and then reassemble the bike.

Install Single Turn Indicator Isolator (If needed)

1. Follow the instructions provided with the isolator.
2. Zip-tie any loose wires and then reassemble the bike.





A	Rear Turn Signal	Qty 2	D	White Trigger Wire	Qty 1
B	Single Turn Indicator Isolator	Qty 2	E	Front Turn Signal	Qty 2
C	LED Flasher Relay	Qty 1			

