



Tuff Light Turn Signals CF Moto 450 IBEX

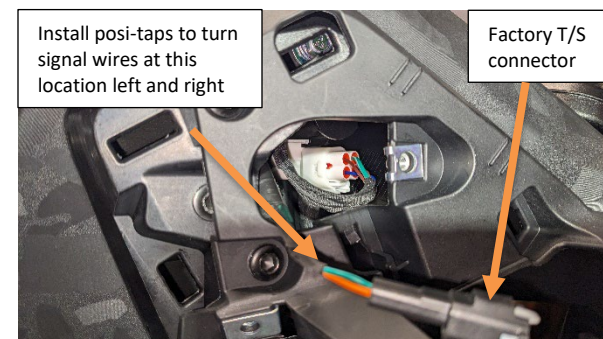
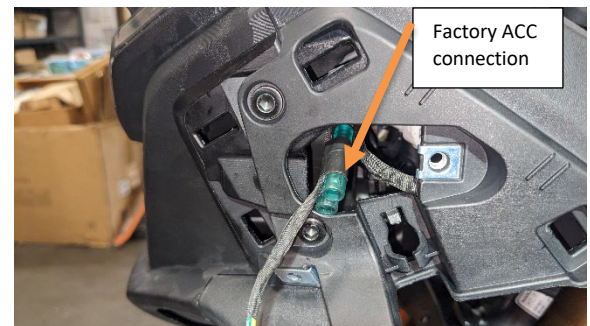
Disclaimer: We assume you possess the expertise and relevant tools to work on your machine. We also assume you have the OEM/Stock owner's manual or technical service manual for your machine. If you do not possess the skills, knowledge, or tools necessary to perform the installation of electrical and/or aftermarket parts, please see a qualified service provider.



Thank you for purchasing the Cyclops Adventure Sports Tuff Light turn signals for the CF Moto 450 IBEX.

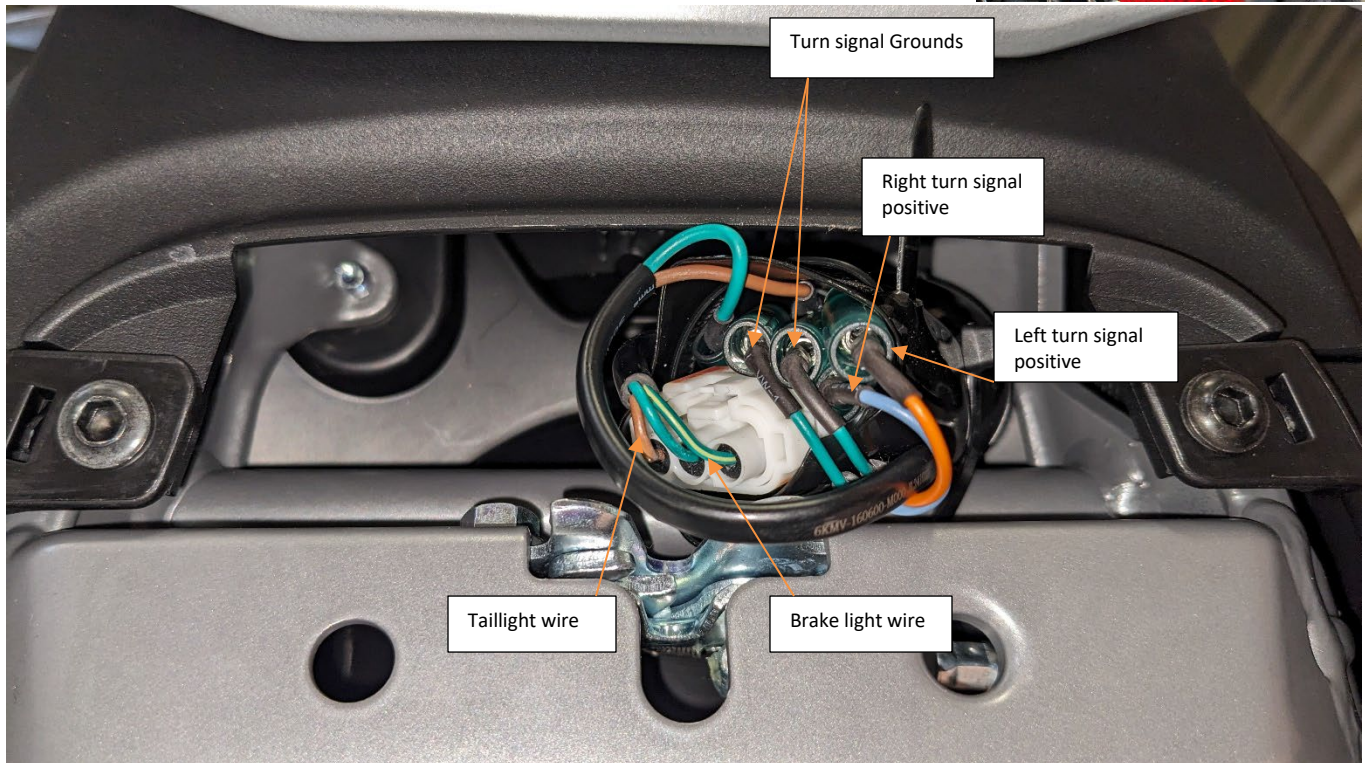
FRONT:

- Start by removing the front side panels and remove the factory turn signals.
- Run wires for front turn signals through hole in side panel and tighten silver lock nut **DO NOT twist turn signal to tighten. Only turn the silver lock nut!!** onto the turn signal stem. Orientate properly. Do not overtighten.
- Locate the front ACC connector. It is attached to the left-hand turn signal wires.
- Install front jumper 'Y' wire to the positive ACC wire. Red/yellow female bullet.
- Connect the white wires with male bullet connector from the left and right Tuff lights to the 'Y' wire.
- Install posi-taps onto factory turn signal wires. Follow posi-tap instructions.
- Connect wires from Tuff lights as follows **R:** Red to Lt Blue, Black to Green. **L:** Red to Orange, Black to Green
- Goto Flasher install section
- **Test System:** White running light in front when key is turned on. Amber turn signals when the left/right switch is applied.
- Once the proper function is achieved, secure all wires. Replace all panels



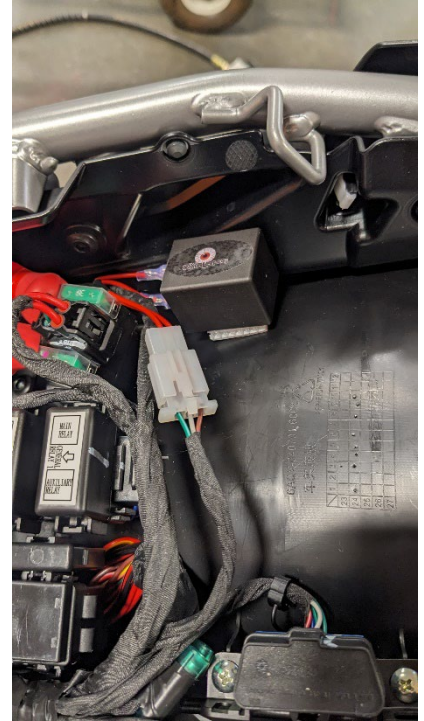
REAR:

- Drop tail section. There are (5) Phillips head screws and (4) 8mm bolts.
- Remove factory turn signals. Note wire routing.
- Run wires for rear turn signals through hole and install and tighten silver lock nut **DO NOT twist turn signal to tighten. Only turn the silver lock nut!!** onto the turn signal stem. Orientate properly. Do not overtighten.
- Route wires as per factory wire route.
- Connect wires with male bullet connectors from Tuff lights to factory female bullet connectors as follows: **R:** Yellow to Lt Blue, Black to Green. **L:** Yellow to Orange, Black to Green.
- Using Posi-Tap. Connect the red wire from turn signals to the Green/white wire on the bike taillight harness for brake light function.
- Using Posi-Tap. Connect the blue wire from turn signals to the Brown wire on the bike taillight harness for taillight function if desired.
- Goto Flasher install section
- **TEST SYSTEM:** Taillight/running light (dim red) on rears when key is turned on (if desired) Red brake lights (bright red) in back when brake is applied. Amber turn signals when the left/right switch is applied.
- Once the proper function is achieved, secure all wires. Replace all panels.



Flasher:

- Locate factory flasher under the seat.
- Replace with Cyclops LED flasher.



Posi-tap instruction:

