

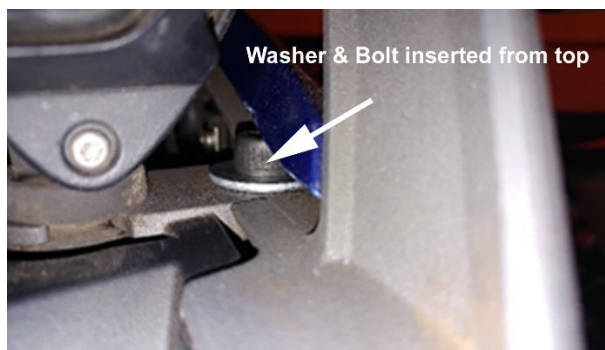


BMW R1200GS/A Light Mount

1. Locate the hole on either side of the headlight just under the metal headlight support. You can see them from underneath. The holes have a hexagonal boss around them.



2. Insert the washers and bolts from the top.



3. Install the spacers then the mounting bracket on one side then the washer and lock nut.
 - a. Leave the mounting hardware loose on the first side you install. This will allow for room to move and align the other side. (Spacers, mounting bracket, washer, locknut).

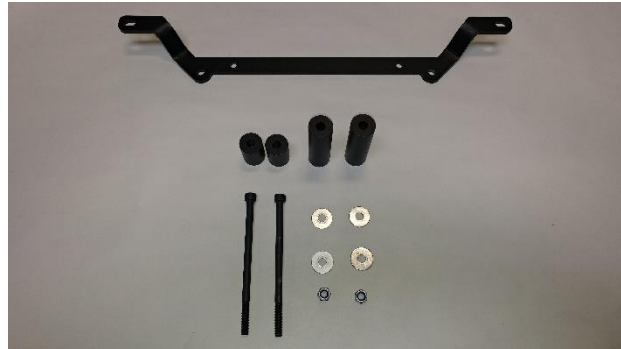


4. Tighten each side evenly. Make sure its tight and secure.



5. Install lights per manufacturer instructions.

6. Recheck nuts/bolts after 50miles of riding.



QTY	GS KIT parts inventory
1	Light mounting bracket
2	3.150" alum. Spacer
2	M8x110mm bolt
2	M8 lock nuts
4	M8 washers

QTY	GSA KIT parts inventory
1	Light mounting bracket
2	3.150" alum. Spacer
2	1.350" alum. Spacer
2	M8x140mm bolt
2	M8 lock nuts
4	M8 washers

