

BMW R1200RT LED Headlight replacement

Disclaimer: We assume you possess the expertise and relevant tools to work on your machine. We also assume you have the OEM/Stock owner's manual or technical service manual for your machine. If you do not possess the skills, knowledge, or tools necessary to perform the installation of electrical and/or aftermarket parts, please see a qualified service provider.

1. 2005-2012 and 2013 Standard model.
 - a. Requires three (3) H-7 bulbs
2. 2013(with halos)-2020
 - a. Requires one (1) H-7 in the center and
 - b. Requires two (2) H-1's in the outer lights.
 - c. This model requires the use of the Canbus resistors included in the kit.
 - i. The Canbus resistors will be placed on the right-side light and the center light as you sit on the motorcycle
3. 2013-2021 with the ring halo lights
 - a. There is no "dual connector" the wires are separate one is the ground the other is the positive wire.
 - b. The power wire comes directly off the back of the bulb
 - c. The ground wire is attached directly to the headlight reflector
 - d. The cyclops LED is not polarity sensitive so these can be placed on either connector on the bulb or resistor ('13-'20)

This installation is challenging, at Cyclops, we recommend complete removal of the headlight assembly.

For reference only, here is a video we found which has detailed directions for removing the headlight assembly. <https://youtu.be/x4g44KQuHWU> If you feel removing the headlight is above your ability, then please seek assistance from a qualified technician.

If you choose to install the bulbs with the headlight assembly on the motorcycle here are a few helpful tips. Please note this will require time and patience but has been successfully completed many times.

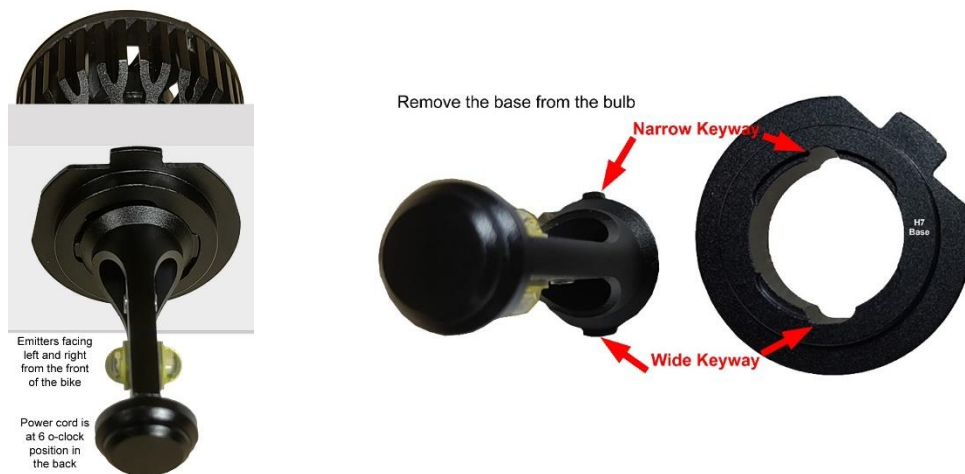
Center Light (low beam)

1. Loosen horn- push back out of way.
2. Remove center cap from back of headlight housing.
3. Remove the connectors on the back of the OEM/Stock bulb.
4. Unclip spring-wire and remove OEM/stock bulb.
5. Unpackage your Cyclops LED bulb and remove the bulb base ring from the bulb.





6. Only one hand will be able to fit into the headlight assembly while the headlight assembly is mounted on the bike. The following steps are to assist in securing the spring-wires.
 - a. Place 3 small dabs of silicone on the bulb base (you are NOT GLUEING this in place).
 - b. The silicone dabs will hold the base in the proper location while the spring-wires are secured.
 - c. Lightly press the base onto the reflector receptacle and let the silicone tack up.
 - d. Once the silicone has tacked-up and the base is sitting in place, secure it with the spring-wires.
7. 2013 and older models (you have no Halo-ring DRL lights on your bike)
 - a. Plug the Cyclops H-7 plug into the OEM/Stock wire connector.
8. 2013 and new models (you have Halo-ring DRL lights on your bike).
 - a. Plug the Canbus resistor black plug into factory wiring harness.
 - b. Plug bulb from H-7 into orange plug Canbus resistor.
 - c. Feed Canbus resistor and bulb driver wire bundle, down into the housing at the 6-o'clock position.
 - d. There may be a bundle of wiring to go around but once past it will all fit nicely down in the headlight.
 - e. The bulb is last to be installed after wires are out of way.
9. Position the bulb inside the base and turn the bulb clockwise until the Keyway's lock into position.
10. Make sure the light emitters are facing left & right (NOT up & down) when viewed from the front.
11. Install the rear bulb cap.



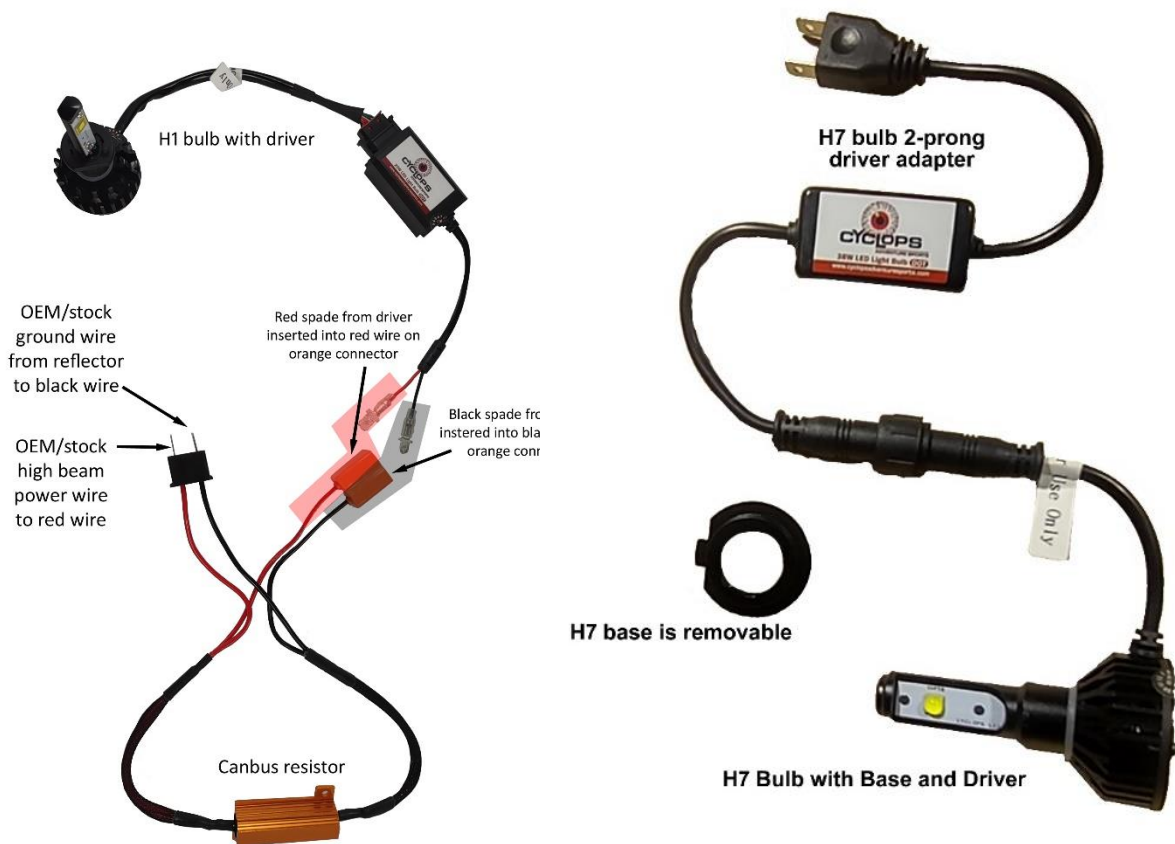
Outside Lights

12. Start by removing your speaker covers and speaker to expose the back of the headlights.
13. Remove caps from rear of headlight housing to expose the bulb.



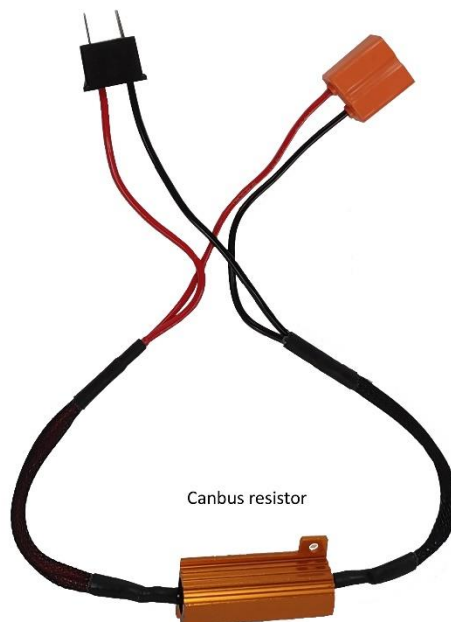


14. Remove the factory electrical connections.
15. Carefully remove the wire spring retainers holding each bulb in place.
 - a. This may require needle nose pliers.
16. Remove the OEM light bulbs and set them aside.
 - a. Remove the grey plastic adapter ring from the H1 LED bulb Place 3 small dabs of silicone on the bulb base (you are NOT GLUEING this in place).
 - i. Let silicone “tack” up.
 - b. The silicone dabs will hold the base in the proper location while the spring-wires are secured.
 - c. Lightly press the base onto the reflector receptacle and let the silicone tack up.
 - d. Once the silicone has “tack” up and the base is sitting in place, secure it with the spring-wires.
17. On the right side, as sitting on the bike, take one of the H1 LEDs and connect that wiring harness to the orange connection block (dual plug) on the Canbus Resistor harness, color matching the wires (red/red, black/black).





18. Remove the black ground wire from the metal ring on the headlight housing and connect it to the black wire on the Canbus Resistor harness.
 19. Connect the power wire (positive wire removed from OEM/stock bulb) to the red wire on the black Canbus connector on the Canbus Resistor harness.
 - 20.
 21. Carefully stuff the entire wiring assembly into the back of the headlight module. Push it in and towards the bottom left of the opening (at about 7 o'clock). Yes, it will fit!!!
 22. Insert the LED bulb into the adapter ring by lining up the slots in the ring with the pins on the bulb and then give it a quarter turn to lock it in place.
 23. On the left side, use the same procedure as above, however, there is NO Canbus resistor used on the left side.
 24. Carefully stuff the entire wiring assembly into the back of the headlight module. Push it in and towards the bottom left of the opening (at about 4 o'clock).
- NOTE: The bulb, when viewed from the front, should be in a vertical position with the flat sides pointing to the left and right sides of the headlight module.
25. Test to ensure operation.
 26. Reassemble headlight housing caps.
 27. Reassemble speaker and speaker cover.
 28. Aim headlights as required.



Canbus resistor

2013 and newer models require the Canbus resistor for the H7 bulb (low beam) - center light

